

Jolt Bar FX



Light Efficiency:

63 Lumen/Watt

Light Quality:

CRI: 87.9

Color Temperature:

7539 K

Output: 13185 lm

Peak: 6900 cd

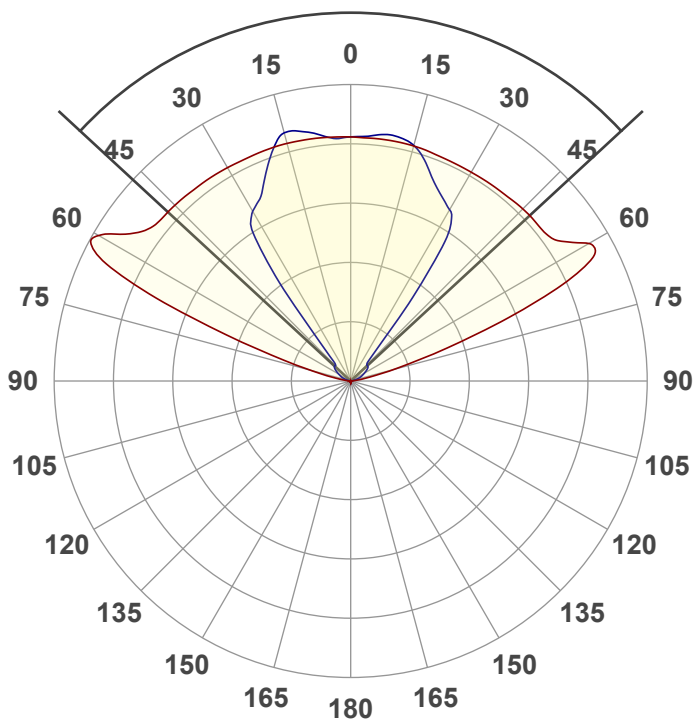
Power: 210.8 W

PF: 0.98



Beam Angle

94.5°



Test:

Full On

Date:

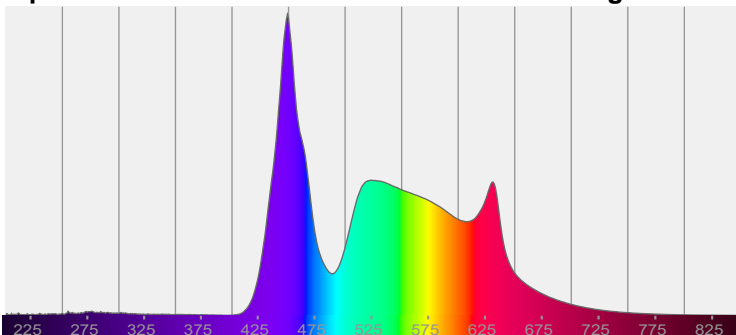
10/4/2022

Note:

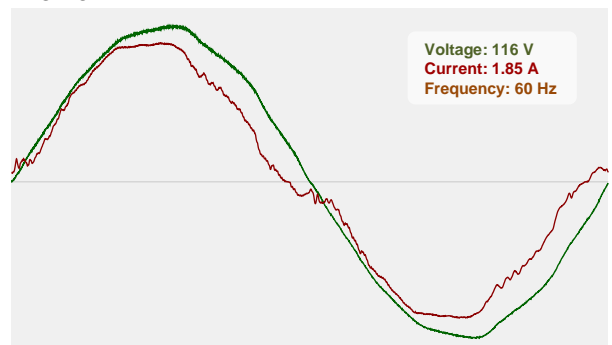
CIE 1931
x: 0.301
y: 0.305

Spectra

Dominant Wavelength: 437nm

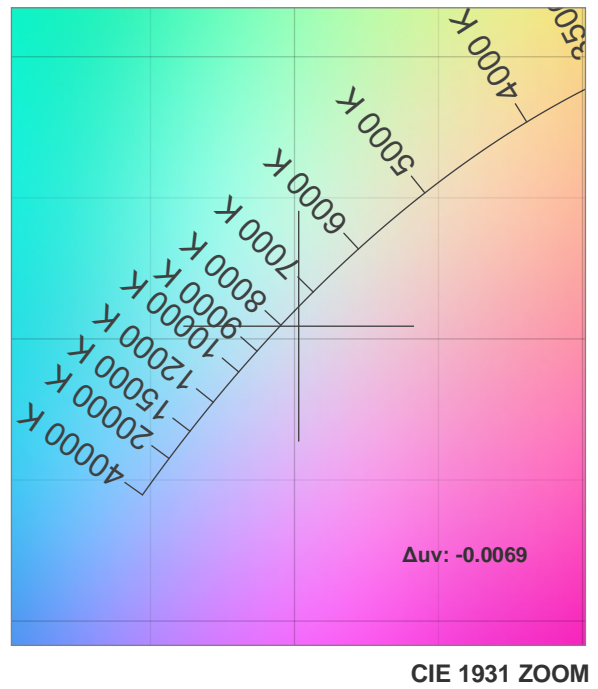
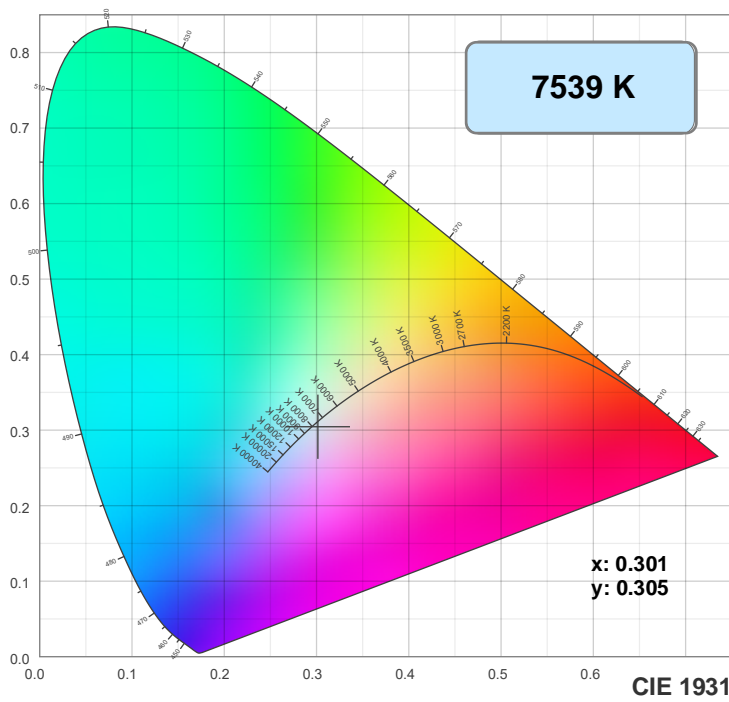


Power

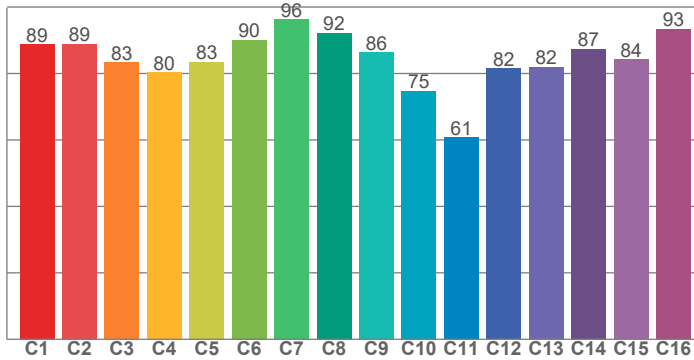


Voltage: 116 V
Current: 1.85 A
Frequency: 60 Hz

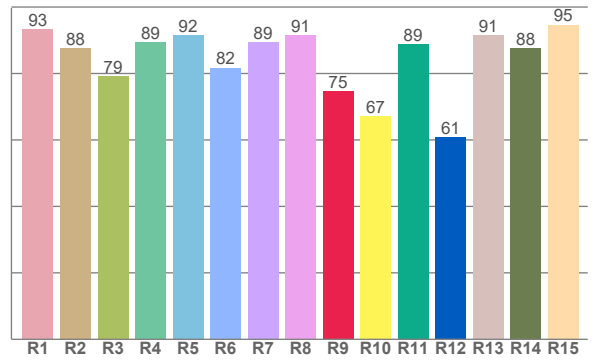
Color Details



TM30: 84.2



CRI: 87.9 (R1-R8)



CRI R values, only R1-R8 are used to calculate final CRI value

R1	R2	R3	R4	R5	R6	R7	R8	R9	R10	R11	R12	R13	R14	R15
93.3	87.7	79.1	89.3	91.5	81.7	89.4	91.4	74.5	67.1	88.9	60.7	91.4	87.6	94.6

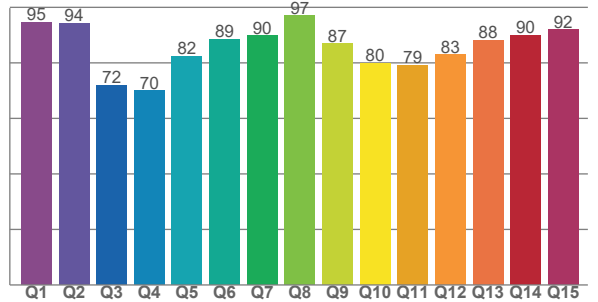
TM30 C values, 16 binned values out of total of 99 C values

C1	C2	C3	C4	C5	C6	C7	C8	C9	C10	C11	C12	C13	C14	C15	C16
88.8	88.9	83.4	80.2	83.5	90.1	96.3	92.2	86.3	74.8	60.8	81.5	82.0	87.4	84.3	93.5

CQS Q values

Q1	Q2	Q3	Q4	Q5	Q6	Q7	Q8	Q9	Q10	Q11	Q12	Q13	Q14	Q15
94.7	94.3	71.9	70.0	82.4	88.6	89.9	97.0	86.9	79.9	79.2	83.0	88.1	90.0	92.1

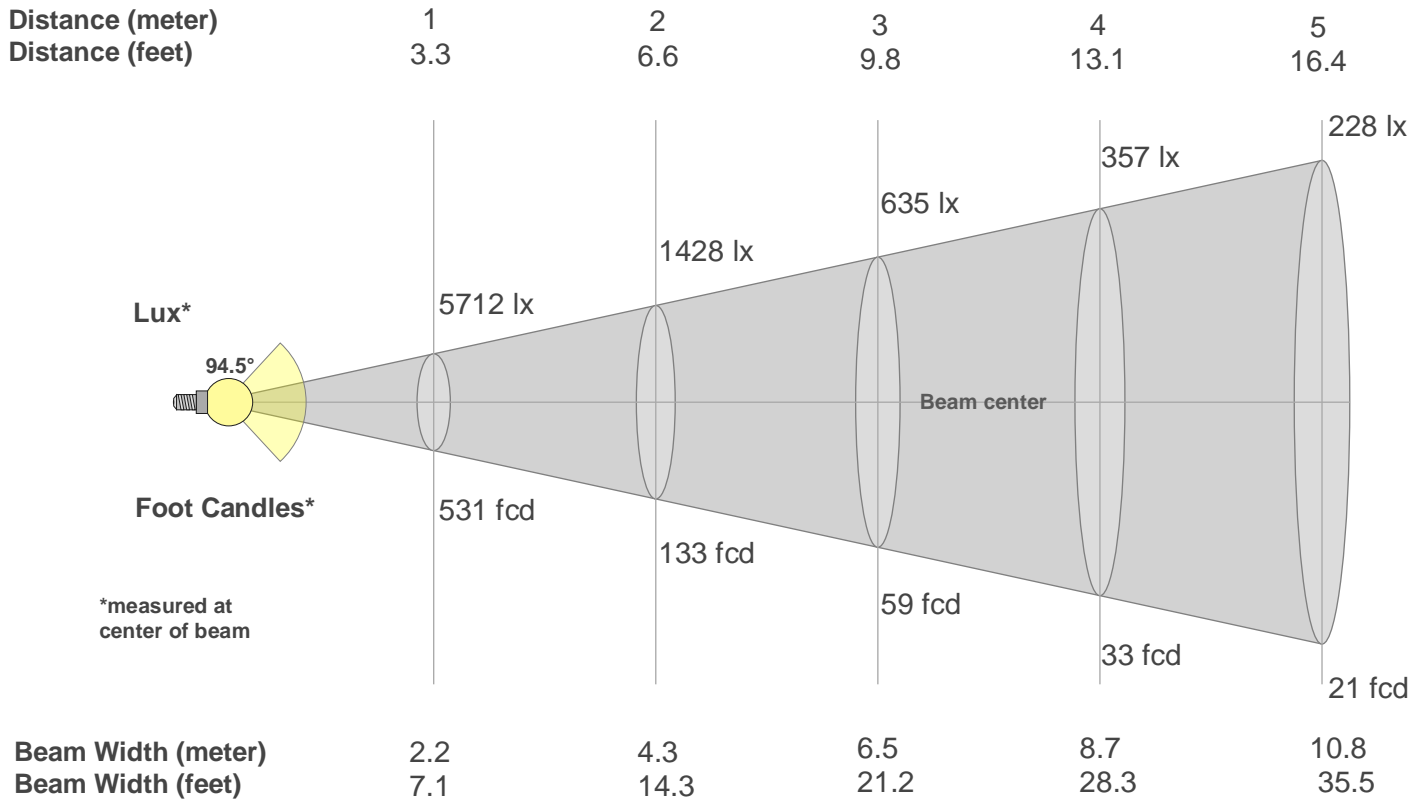
CQS: 83.9



Color Parameters

Color Temperature	Color Rendering Index	Red Component	Color Fidelity	Color Gamut	Color Quality Scale	Color Coordinate CIE 1931	Color Coordinate CIE 1931	Color Coordinate	Color Coordinate	Color Deviation from Black Body
CCT	CRI	CRI R9	TM30 Rf	TM30 Rg	CQS	x	y	u	v	Δuv
7539 K	87.9	74.5	84.2	102.0	83.9	0.301	0.305	0.199	0.302	-0.0069

Beam Details



Beam Intensities from 1-20m

m	1	2	3	4	5	6	7	8	9	10	11	12	13	14	15	16	17	18	19	20
ft	3.3	6.6	9.8	13.1	16.4	19.7	23	26.2	29.5	32.8	36.1	39.4	42.7	45.9	49.2	52.5	55.8	59.1	62.3	65.6
lx	5712	1428	635	357	228	159	117	89	71	57	47	40	34	29	25	22	20	18	16	14
fcd	530.7	132.7	59	33.2	21.2	14.7	10.8	8.3	6.6	5.3	4.4	3.7	3.1	2.7	2.4	2.1	1.8	1.6	1.5	1.3

Intensities in 0° C-plane

0°	5°	10°	15°	20°	25°	30°	35°	40°	45°	50°	55°	60°	65°	70°	75°	80°	85°	90°	95°
5712	5729	5746	5760	5761	5756	5769	5785	5796	5821	5843	6082	6779	6008	2933	1056	293	51	1	1
100%	100%	101%	101%	101%	101%	101%	101%	101%	102%	102%	106%	119%	105%	51%	18%	5%	1%	0%	0%

Intensities in 90° C-plane

0°	5°	10°	15°	20°	25°	30°	35°	40°	45°	50°	55°	60°	65°	70°	75°	80°	85°	90°	95°
5712	5729	5917	5996	5536	4915	4572	3319	815	513	495	418	325	250	168	86	28	3	0	0
100%	100%	104%	105%	97%	86%	80%	58%	14%	9%	9%	7%	6%	4%	3%	2%	0%	0%	0%	0%

Intensities in 180° C-plane

0°	5°	10°	15°	20°	25°	30°	35°	40°	45°	50°	55°	60°	65°	70°	75°	80°	85°	90°	95°
5712	5706	5707	5698	5668	5649	5646	5655	5666	5699	5708	5808	6412	5639	2979	1068	329	76	8	1
100%	100%	100%	100%	99%	99%	99%	99%	99%	100%	100%	102%	112%	99%	52%	19%	6%	1%	0%	0%

Intensities in 270° C-plane

0°	5°	10°	15°	20°	25°	30°	35°	40°	45°	50°	55°	60°	65°	70°	75°	80°	85°	90°	95°
5712	5768	5829	5701	5305	4898	4612	3367	878	539	525	464	372	291	205	107	41	6	0	0
100%	101%	102%	100%	93%	86%	81%	59%	15%	9%	9%	8%	7%	5%	4%	2%	1%	0%	0%	0%

Beam Angle 50%	Field Angle 10%	Cutoff Angle 2,5%	Intensity Ratio in 120° Cone	Intensity Ratio in 90° Cone
94.5°	107.8°	151.1°	84.0%	65.3%